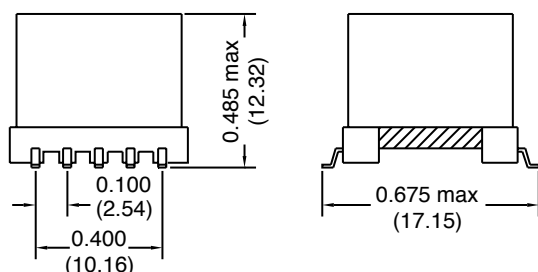
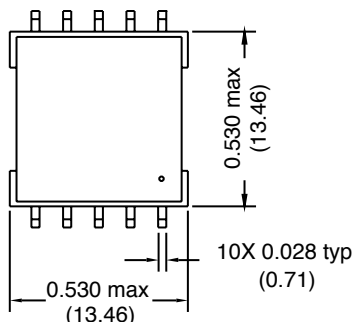


HALO Electronics has developed this standard series of 10 pin SMD modules to provide excellent results in high performance DSL circuits. This series is designed to meet the supplementary insulation requirements of UL60950, IEC60950 and EN60950 for a primary circuit at a working voltage of 250V. To select the correct Line Interface device, please refer to the [DSL Selection Guide](#).

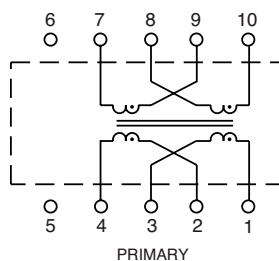


EP13-S Package

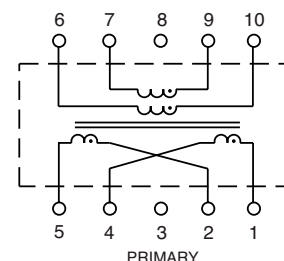


DIMENSIONS : Inch(mm)

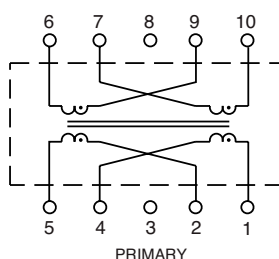
Schematic A



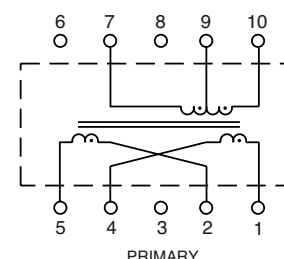
Schematic B



Schematic C



Schematic D



Electrical Specifications @ 25°C

Isolation Voltage: 1,500 Vrms
 Longitudinal Balance (10KHz-1MHz) -50dB Typ

Patented Construction

US Pat Nbrs: 5,656,985 6,297,721 B1
 6,297,720 B1 6,320,489 B1
 6,344,785 B1 6,662,431 B1

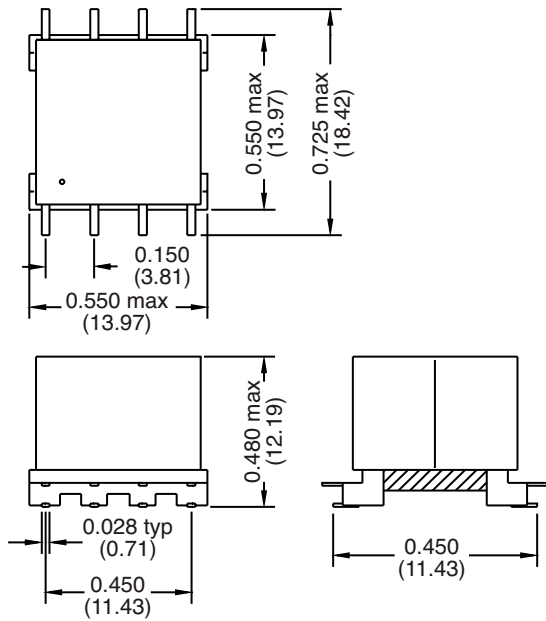
Part Number	Turns Ratio PRI : SEC	Circuit Schematic	OCL (10KHz, 0.1V)	LL (μH max)	Pri DCR
TG11-DSL02SEP	1:1 ±2% (short 2-3,8-9)	A	5.0mH ±10%	15	3.0Ω max
TG11-DSL17SEP	1:1 ±2% (short 2-3,8-9)	A	550μH ±10%	8.0	1.0Ω max
TG11-DSL21SEP	1:1 ±2% (short 2-3,8-9)	A	480μH ±10%	10	1.0Ω max
TG11-DSL34SEP	1:1 ±2% (short 2-4,7-9)	C	430μH ±10%	10	0.8Ω max
TG12-DSL35SEP	2:1 ±2% (short 2-3,8-9)	A	410μH ±10%	6.5	0.6Ω max
TG25-DSL13SEP	1:1.266 ±2% (short 2-3,8-9)	A	1.8mH min	10	2.0Ω max
TGSP-DSL25SEP*	2.3:1CT ±2% (short 2-4)	D	2.0mH ±10%	35	3.72Ω ±10%
TGSP-DSL26SEP*	1.2:1 ±1% (short 2-4,6-9)	B	3.96mH ±5%	15	3.82Ω ±10%
TGSP-DSL29SEP	1:1.8 ±2% (short 2-4,6-9)	B	3.0mH ±10%	30	2.3Ω max
TGSP-DSL36SEP	1:1.8 ±1.5% (short 2-4,6-9)	B	3.96mH ±5%	20	9.4Ω ±10%
TGSP-DSL37SEP	1:1.95 ±2% (short 2-3,8-9)	A	1.5mH ±10%	15	0.55Ω max

*Pin 3 Removed

HALO Electronics has developed this standard series of 8 pin SMD modules to provide excellent results in high performance DSL circuits. This series is designed to meet the supplementary insulation requirements of UL60950, IEC60950 and EN60950 for a primary circuit at a working voltage of 250V. To select the correct Line Interface device, please contact your local HALO Representative.

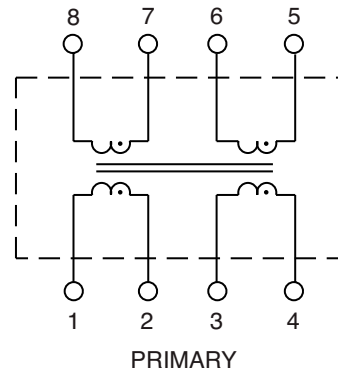


EP13-8P Package

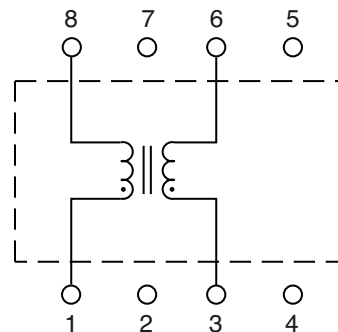


DIMENSIONS : Inch(mm)

Schematic A



Schematic B



Electrical Specifications @ 25°C

Isolation Voltage: 1,500 Vrms
 Longitudinal Balance (10KHz-1MHz): -50dB Typ

Patented Construction

US Pat Nbrs: 5,656,985 6,297,721 B1
 6,297,720 B1 6,320,489 B1
 6,344,785 B1 6,662,431 B1

Part Number	Turns Ratio PRI : SEC	Circuit Schematic	OCL (10KHz, 0.1V)	LL (μ H max)	Pri DCR (Pri's shorted)
TG01-DSL31SEP	1:1 \pm 1%	B	3mH \pm 15%	15	3.0 Ω max
TGSP-DSL07SEP	1:1.4 \pm 2% (short 2-3, 7-6)	A	230 μ H \pm 10%	10	1.0 Ω max
TGSP-DSL08SEP	1:1 \pm 2% (short 2-3, 7-6)	A	650 μ H \pm 25%	10	1.4 Ω max
TGSP-DSL32SEP	1:1.6 \pm 1% (short 2-3, 7-6)	A	1172 \pm 12%	15	4.0 Ω max