

4kV Reinforced Isolation Transformer



Reinforced Insulation Isolation Modules for DC/DC Converter Circuits



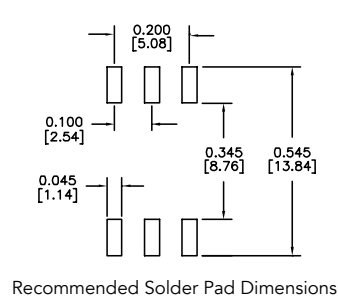
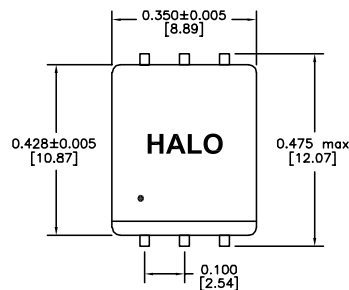
Product Features:

- Designed for Isolated Push-Pull DC/DC Circuits
- Cost-Effective Reinforced Transformer
- UL60950/UL62368 Recognized for Reinforced Insulation
- Minimum 4mm Clearance/Creepage Distance for 300VAC Working Voltages

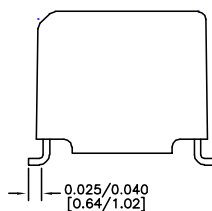
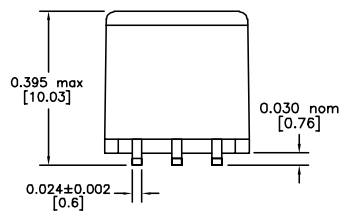
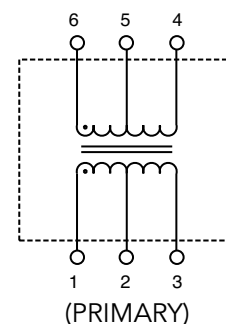
Part Number	Turns Ratio	Input Current (PRI max)	PRI OCL ($\mu\text{H typ}$)	PRI DCR (Ωmax)	Isolation Voltage (Vrms)	ET Constant (PRI min)	Temp. Range
TGRDC-F10V5LF	1CT:0.5CT	300mA	600	0.8	4,000	22V- μs	-40 to +85°C
TGRDC-F30V5LF	1CT:0.75CT	300mA	384	0.7	4,000	18V- μs	-40 to +85°C
TGRDC-F40V5LF	1CT:1.33CT	300mA	600	0.8	4,000	22V- μs	-40 to +85°C
TGRDC-F50V5LF	1CT:1CT	300mA	600	0.8	4,000	22V- μs	-40 to +85°C
TGRDC-F55V5LF	1CT:1.5CT	300mA	600	0.8	4,000	22V- μs	-40 to +85°C
TGRDC-F60V5LF	1CT:2CT	300mA	600	0.8	4,000	22V- μs	-40 to +85°C
TGRDC-F70V5LF	1CT:1.6CT	300mA	600	0.8	4,000	22V- μs	-40 to +85°C
TGRDC-F75V5LF	1CT:1.75CT	300mA	384	0.7	4,000	18V- μs	-40 to +85°C
TGRDC-F80V5LF	1CT:2.66CT	300mA	600	0.8	4,000	22V- μs	-40 to +85°C

Notes:

- Please contact the factory or representative for individual datasheets or additional information
- For medical applications please contact factory at info@haloelectronics.com or (650) 903-3800



Circuit Diagram



Dimensions: inch [mm]
Co-planarity: 0.004" [0.1]
Tolerances: ± 0.005 " [0.13mm] if not specified



(650) 903-3800

www.haloelectronics.com

HALO® Electronics is a leading supplier of high quality communication magnetics including signal transformers, filters, CMR chokes, PoE power transformers, DC/DC converters, and integrated Ethernet connectors. HALO's leading edge technology solutions are manufactured in ISO9001 and ISO14001 factories offering high quality products at a competitive price.

© Copyright 2019 HALO Electronics, Inc. All rights reserved.

Download the latest version at <https://www.haloelectronics.com/pdf/discrete-dc2dc-tgrdcf.pdf>